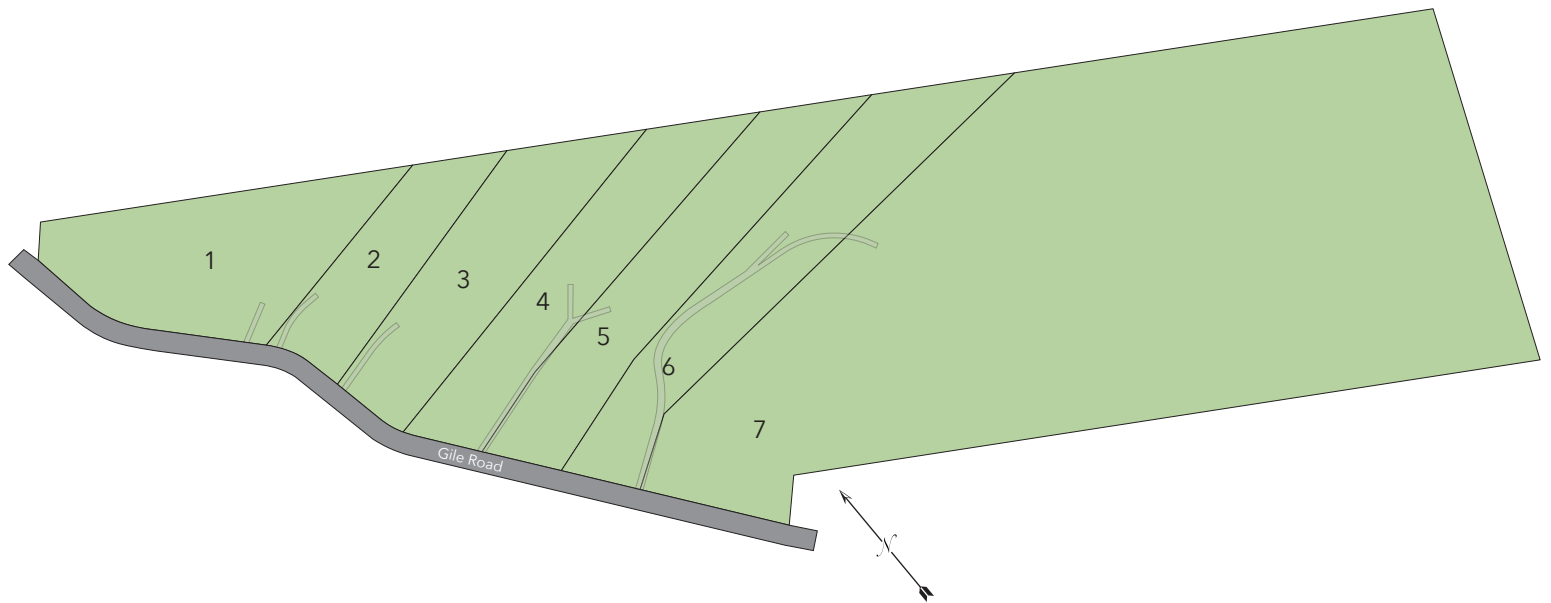




Gile Woods is located in quaint Nottingham, NH, with seven thoughtfully planned frontage lots ranging from 2.5 - 35.75+/- acres. Residents have easy access to nearby commuter routes and local small businesses alike. This serene country setting offers the privacy of rural living and the convenience of in-town luxuries. Our home plans offer customizable, stand-out finishes and quality construction.

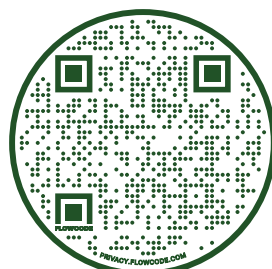


FOR MARKETING PURPOSES ONLY. NOT TO SCALE. SUBJECT TO CHANGE WITHOUT NOTICE.

For more information and to view available lots

Visit us online at:
TheGoveGroup.com/
Gile-Woods

or



or

Text
GILE
to 603.686.8272





Similar Homes



NOTTINGHAM, NH



Drive to: **Portsmouth, NH** 32 min



Drive to: **Concord, NH** 43 min



Drive to: **Manchester, NH** 35 min



Drive to: **Boston, MA** 1 hr 17 min

BUILDER



JP Structures, LLC.

SALES AGENTS



CRAIG FORMALARIE, REALTOR®

603.490.4281 | direct
cformalarie@thegovegroup.com

For more information about Wright Builders and our other current projects please visit us online!



The Gove Group Real Estate, LLC.

70 Portsmouth Ave | Stratham, NH 03885 :: 603.778.6400
952 Post Road, Suite 9 | Wells, ME 04090 :: 207.618.5000
TheGoveGroup.com